

# TIMING BELT

## REMOVAL AND INSTALLATION

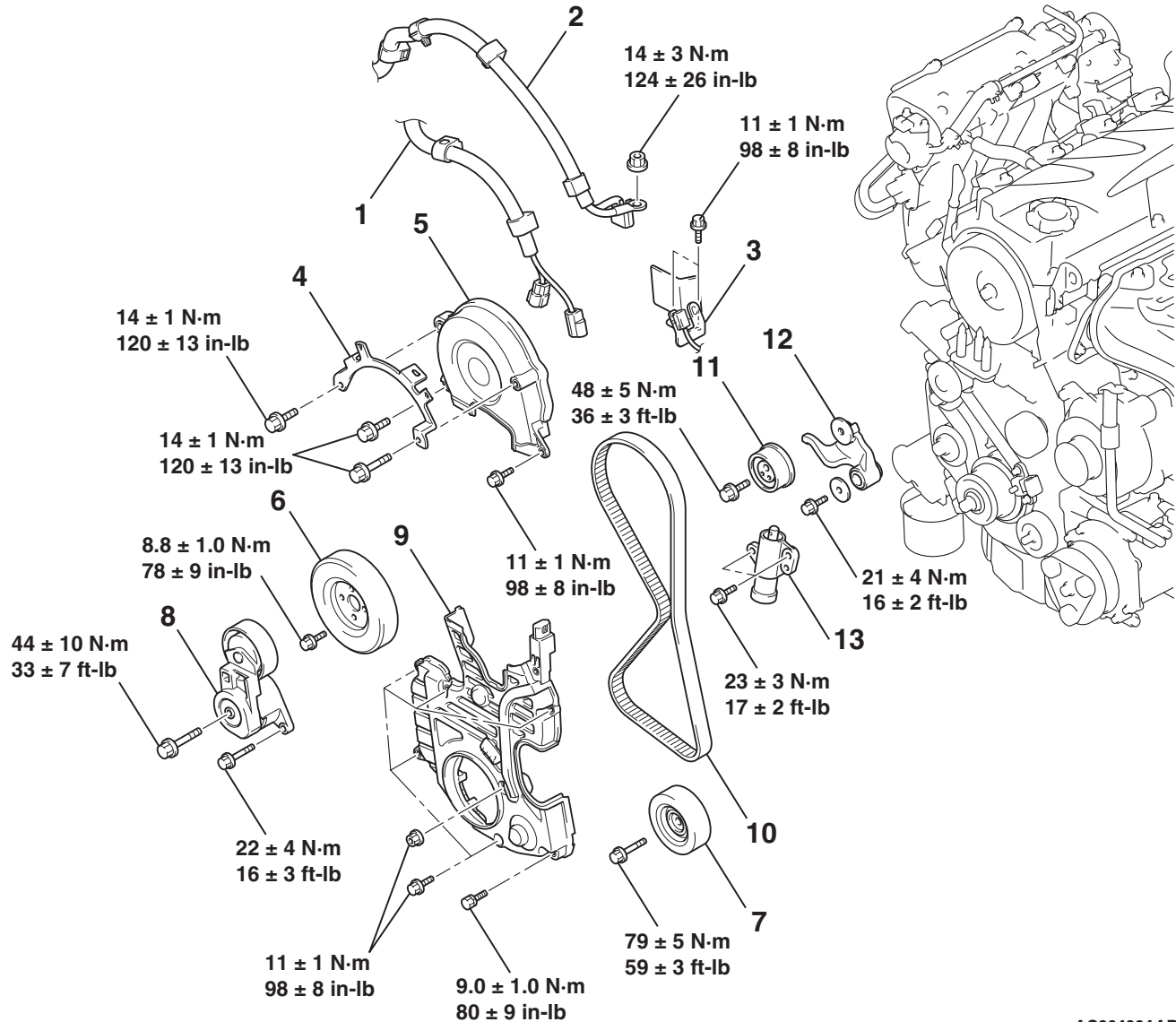
M1112004300805

**Pre-removal Operation**

- Under Cover Removal.
- Crankshaft Shaft Damper Pulley Removal (Refer to P.11C-25).

**Post-installation Operation**

- Crankshaft Shaft Damper Pulley Installation (Refer to P.11C-25).
- Drive Belt Tension Check (Refer to P.11C-8).
- Under Cover Installation.



AC304394AB

**REMOVAL STEPS**

- CONTROL WIRING HARNESS CONNECTION
- BATTERY WIRING HARNESS CONNECTION
- CONNECTOR BRACKET
  - ENGINE MOUNTING INSULATOR (REFER TO GROUP 32, ENGINE MOUNT P.32-4).
- HARNESS BRACKET
- TIMING BELT UPPER COVER
- WATER PUMP PULLEY

**REMOVAL STEPS (Continued)**

- IDLER PULLEY
- AUTO-TENSIONER
- TIMING BELT LOWER COVER
  - VALVE TIMING BELT TENSION ADJUSTMENT (INSTALLATION ONLY)
- VALVE TIMING BELT
- TIMING BELT TENSIONER PULLEY