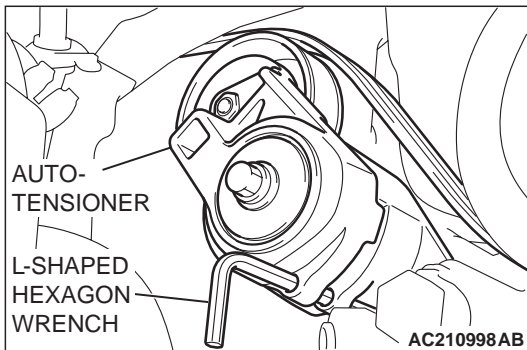


1. Securely insert the spindle handle or ratchet handle with a 12.7mm (1/2-inch) insertion angle into the jig hole of the auto-tensioner, and turn the auto-tensioner counterclockwise until it hits the stopper.

**⚠ CAUTION**

To reuse the drive belt, draw an arrow indicating the rotating direction (to the right) on the back of the belt using chalk, etc.



2. Align hole A with hole B, insert an L-shaped hexagon wrench, etc. to fix and then remove the drive belt.

# CRANKSHAFT PULLEY

## REMOVAL AND INSTALLATION

M1112001600335

**CAUTION**

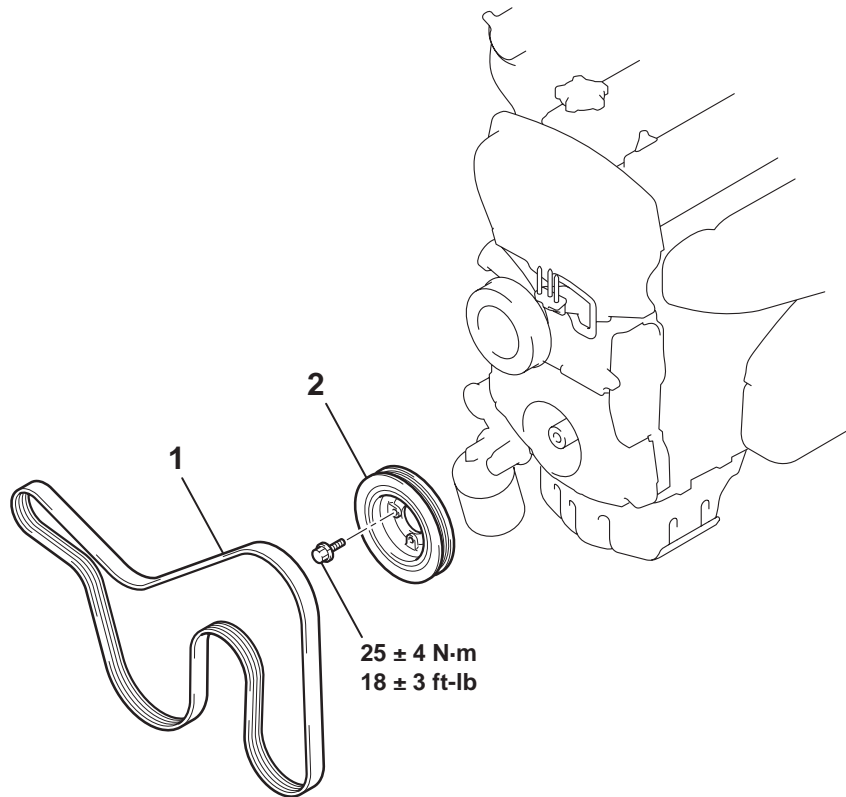
If the vehicle is equipped with the Brembo™ disc brake, during maintenance, take care not to contact the parts or tools to the caliper because the paint of caliper will be scratched.

**Pre-removal Operation**

- Under Cover Removal (Refer to GROUP 51, Front Bumper P.51-2.)
- Side Cover Removal

**Post-installation Operation**

- Drive Belt Tension Check (Refer to P.11A-7.)
- Side Cover Installation
- Under Cover Installation (Refer to GROUP 51, Front Bumper P.51-2.)



AC210941AB

&lt;&lt;A&gt;&gt;

**REMOVAL STEPS**

1. DRIVE BELT
2. CRANK SHAFT DAMPER PULLEY

**REMOVAL SERVICE POINT****<<A>> DRIVE BELT REMOVAL**

The following operations will be needed due to the serpentine drive system with the drive belt auto-tensioner.

INSPECTION

M1321001500114

- Check the transaxle mounting insulator for cracks, separation or deformation.
- Check the transaxle mounting stoppers for deformation.

ENGINE ROLL STOPPER AND CENTERMEMBER

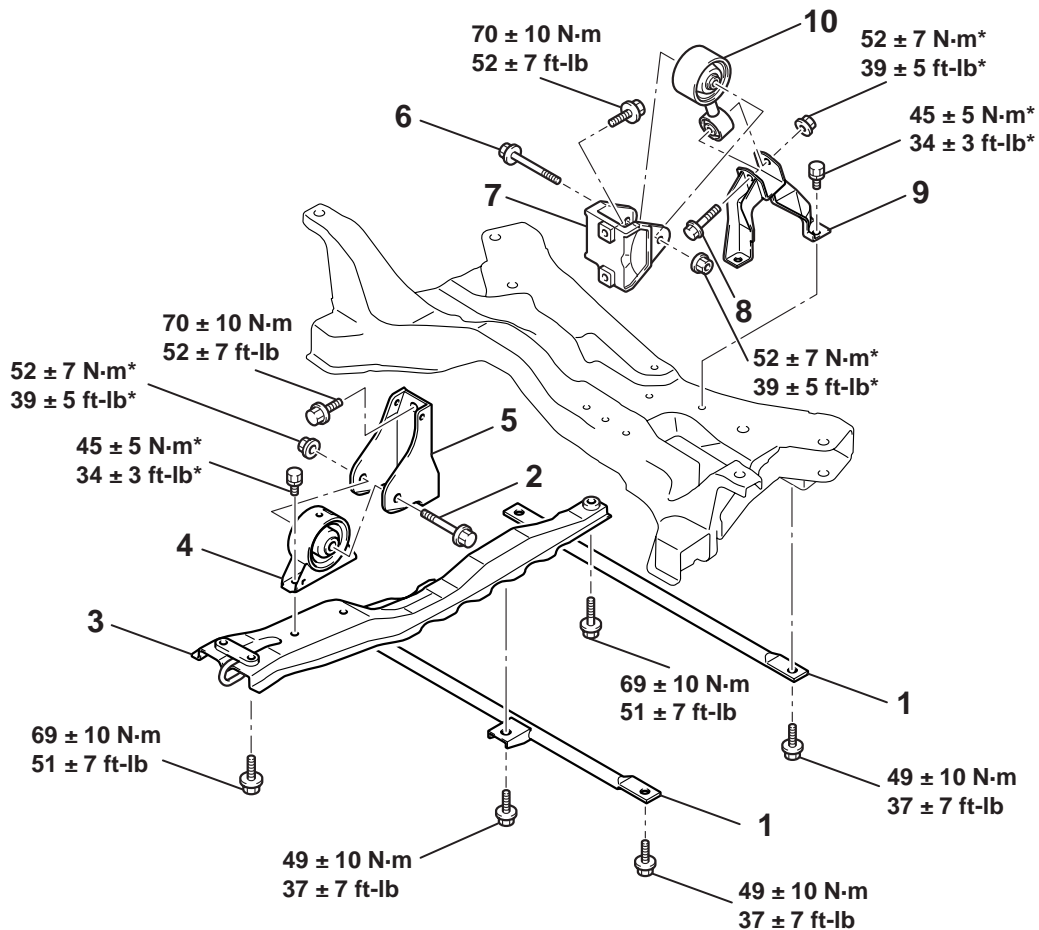
REMOVAL AND INSTALLATION

M1321002300243

**CAUTION**

\*: Indicates parts which should be initially tightened, and then fully tightened after placing the vehicle horizontally and loading the full weight of the engine on the vehicle body.

Pre-removal Operation	Post-installation Operation
<ul style="list-style-type: none"> <li>• Under Cover Removal (Refer to GROUP 51, Front Bumper P.51-2).</li> </ul>	<ul style="list-style-type: none"> <li>• Under Cover Installation (Refer to GROUP 51, Front Bumper P.51-2).</li> </ul>



AC210447AB

**FRONT ROLL STOPPER  
BRACKET AND  
CENTERMEMBER REMOVAL  
STEPS**

1. FRONT AXLE CROSSMEMBER BARS
2. ENGINE FRONT ROLL STOPPER BRACKET BOLT
3. FRONT SUSPENSION CENTERMEMBER
- >>A<< 4. ENGINE FRONT ROLL STOPPER BRACKET
5. TRANSAXLE CASE FRONT ROLL STOPPER BRACKET

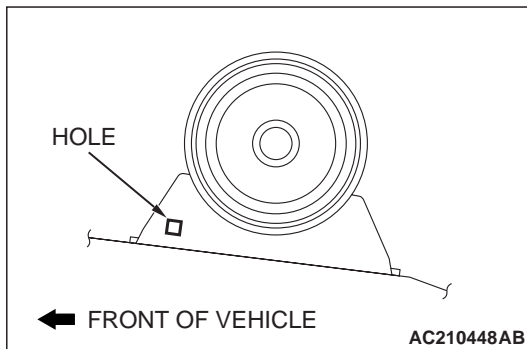
**REAR ROLL STOPPER ROD  
REMOVAL STEPS**

6. ENGINE REAR ROLL STOPPER ROD BOLT
7. TRANSAXLE CASE REAR ROLL STOPPER BRACKET
8. ENGINE REAR ROLL STOPPER ROD BOLT
9. ENGINE REAR ROLL STOPPER ROD BRACKET
10. ENGINE REAR ROLL STOPPER ROD

**INSTALLATION SERVICE POINT**

**>>A<< ENGINE FRONT ROLL STOPPER BRACKET  
INSTALLATION**

Install the front roll stopper so that its hole points towards the front side of the vehicle.



**INSPECTION**

M1321002400024

- Check the engine roll stopper insulators for cracks, separation or deformation.