

TIMING BELT

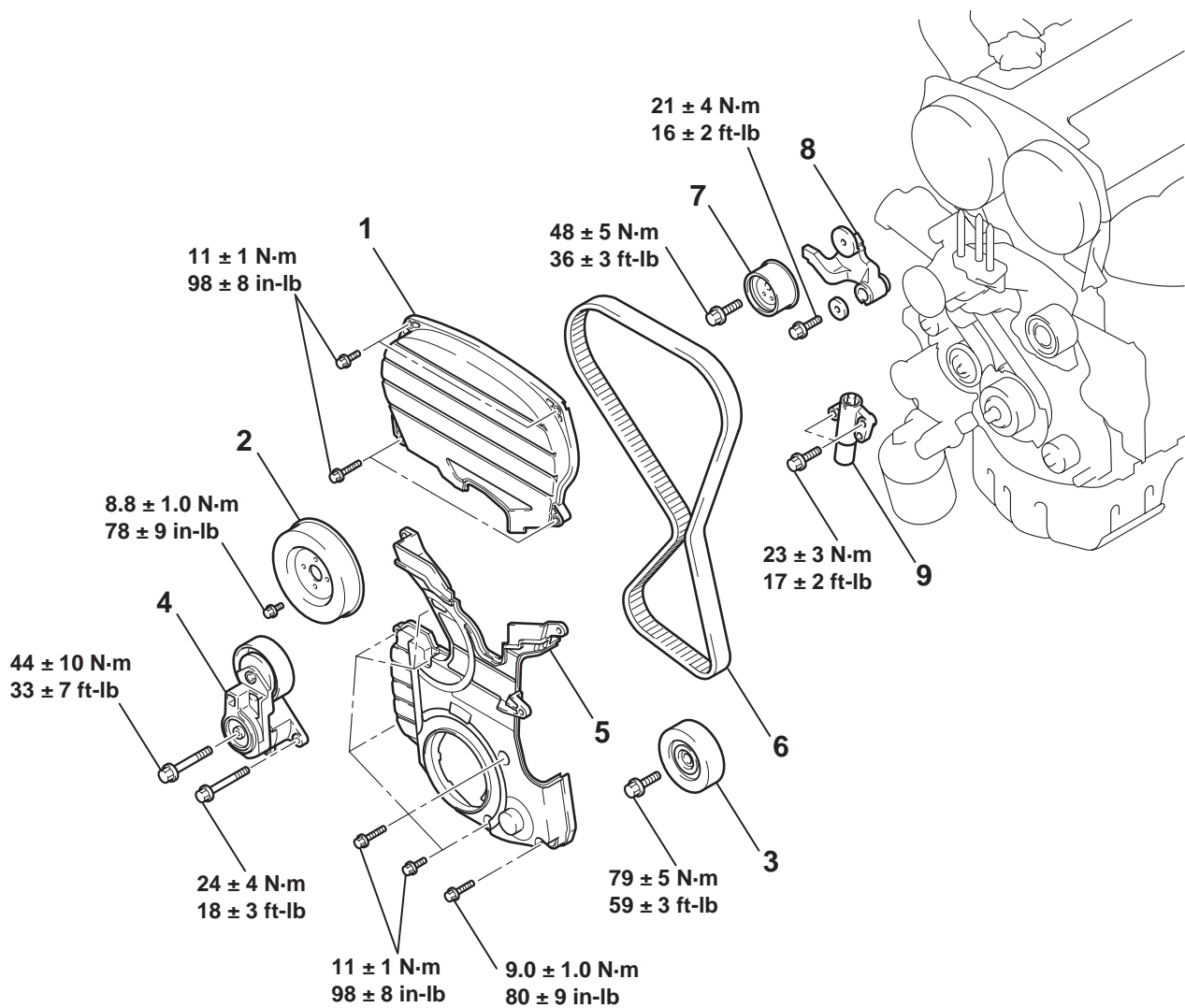
REMOVAL AND INSTALLATION

M1112004300593

CAUTION

If the vehicle is equipped with the Brembo™ disc brake, during maintenance, take care not to contact the parts or tools to the caliper because the paint of caliper will be scratched.

Pre-removal Operation	Post-installation Operation
<ul style="list-style-type: none"> Under Cover Removal (Refer to GROUP 51, Front Bumper P.51-2.) Side Cover Removal Crankshaft Shaft Damper Pulley Removal (Refer to P.11A-26.) Front Axle Crossmember Bar Removal (Refer to GROUP 32, Engine Roll Stopper and Centermember P.32-6.) Front Exhaust Pipe Removal (Refer to GROUP 15, Exhaust Pipe and Main Muffler P.15-23.) 	<ul style="list-style-type: none"> Front Exhaust Pipe Installation (Refer to GROUP 15, Exhaust Pipe and Main Muffler P.15-23.) Front Axle Crossmember Bar Installation (Refer to GROUP 32, Engine Roll Stopper and Centermember P.32-6.) Crankshaft Shaft Damper Pulley Installation (Refer to P.11A-26.) Drive Belt Tension Check (Refer to P.11A-7.) Side Cover Installation Under Cover Installation (Refer to GROUP 51, Front Bumper P.51-2.)



AC211075AB

REMOVAL STEPS

1. TIMING BELT UPPER COVER
2. WATER PUMP PULLEY
3. IDLER PULLEY

REMOVAL STEPS (Continued)

4. AUTO-TENSIONER
5. TIMING BELT LOWER COVER

TSB Revision