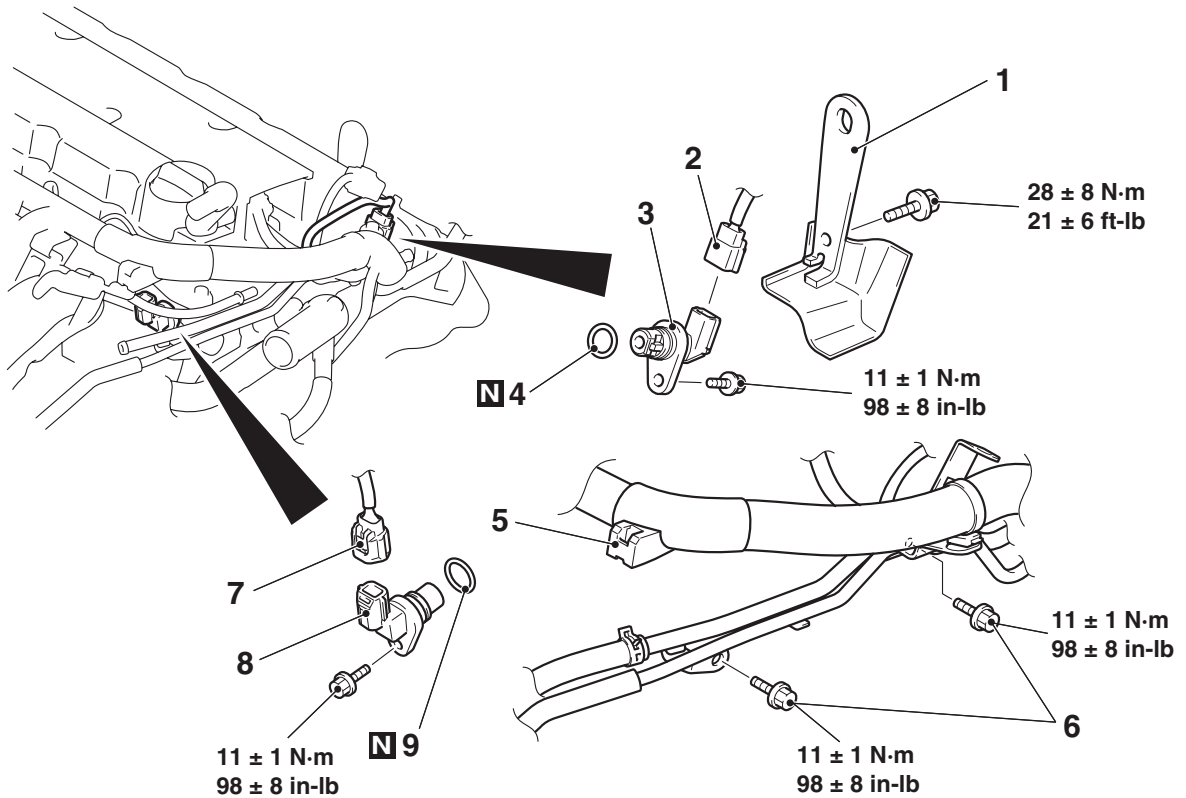


CAMSHAFT POSITION SENSOR
REMOVAL AND INSTALLATION

M1163003401026



AC611355 AB

Removal steps <Exhaust side>

1. Engine hanger
2. Camshaft position sensor connector
3. Exhaust camshaft position sensor
4. O-ring

Removal steps <Intake side>

- Air cleaner cover and air cleaner intake hose (Refer to GROUP 15 –Air Cleaner P.15-4).
5. Control harness clamp

Removal steps <Intake side>

6. Emission vacuum hose and pipe assembly mounting bolt
 - Injector protector rear (Refer to GROUP 13A –Injector P.13A-945).
7. Camshaft position sensor connector
8. Intake camshaft position sensor
9. O-ring