

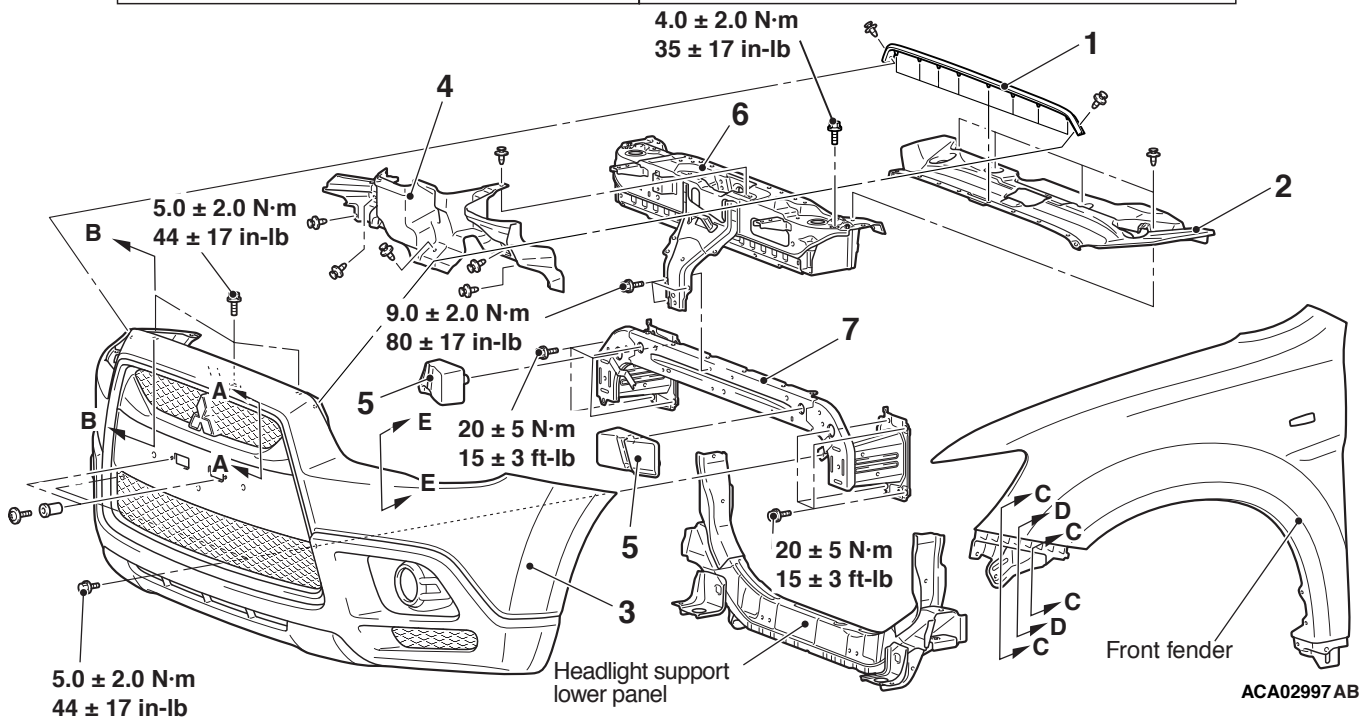
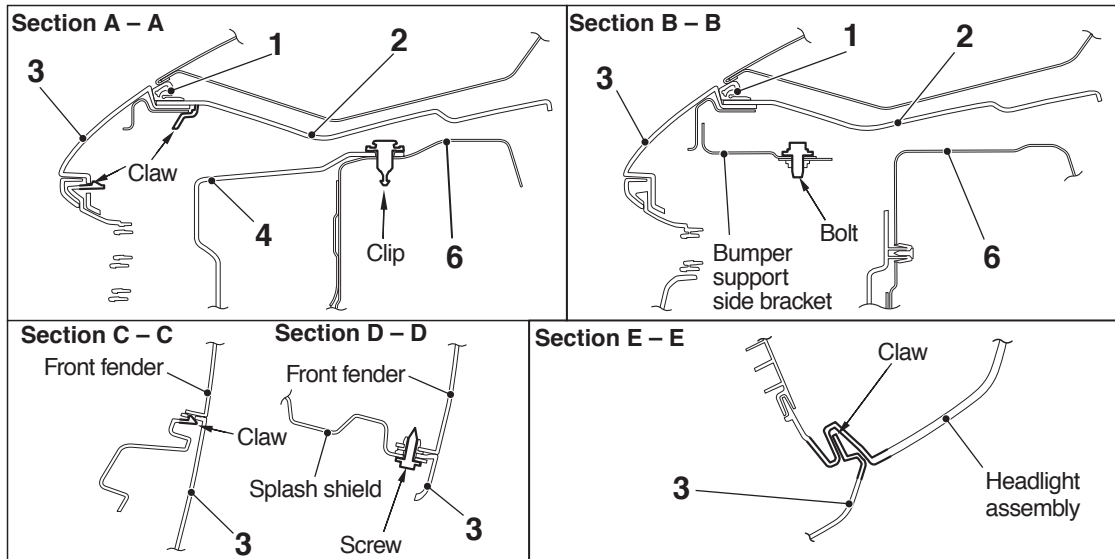
FRONT BUMPER ASSEMBLY

REMOVAL AND INSTALLATION

M1511001402309

Pre-removal and post-installation operation

- Engine room under cover front removal and installation (Refer to P.51-17.)
- Front wheelhouse splash shield removal and installation (Refer to GROUP 42A, Splash Shield P.42A-9.)

**Removal steps**

- Front fog light connector connection <Vehicles with front fog light>
1. Hood weatherstrip front
 2. Headlight support upper panel cover
 3. Front bumper assembly

Removal steps (Continued)

4. Front bumper cover
5. Front bumper core
6. Headlight support upper panel
 - Horn (Refer to Group 54A, Horn P.54A-315)
- Front harness

Removal steps (Continued)

- Ambient temperature sensor (Refer to Group 55A, Ambient Temperature Sensor [P.55A-115](#))
- 7. Front bumper reinforcement A

DISASSEMBLY AND ASSEMBLY

M1511001602530

